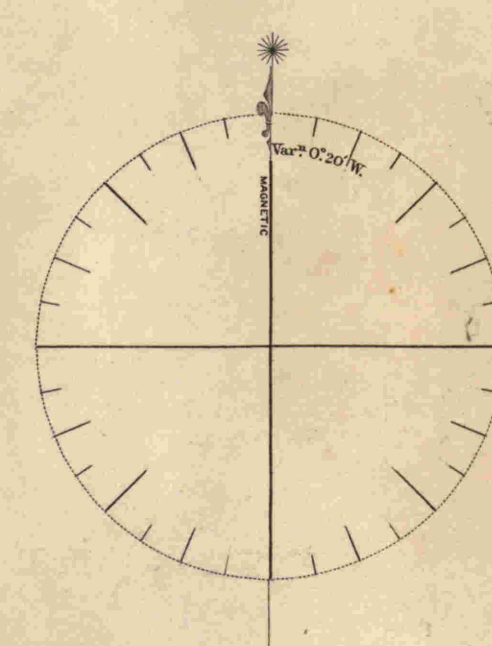
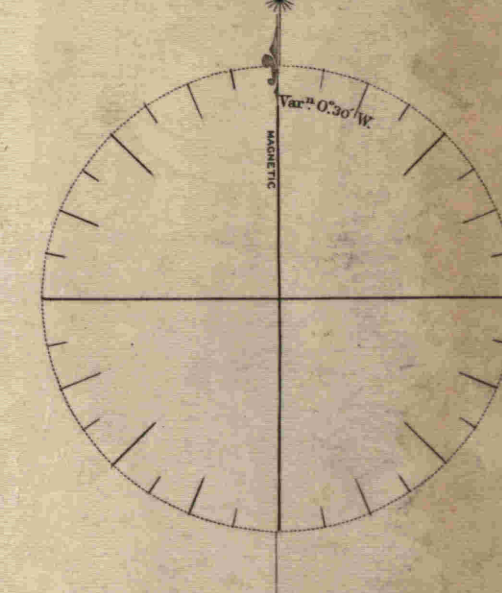
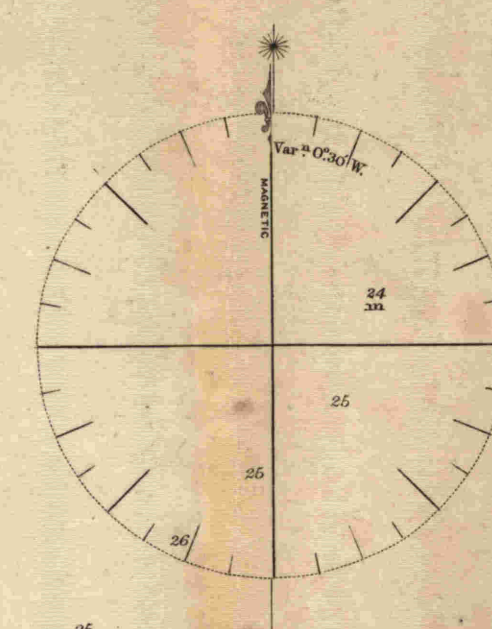
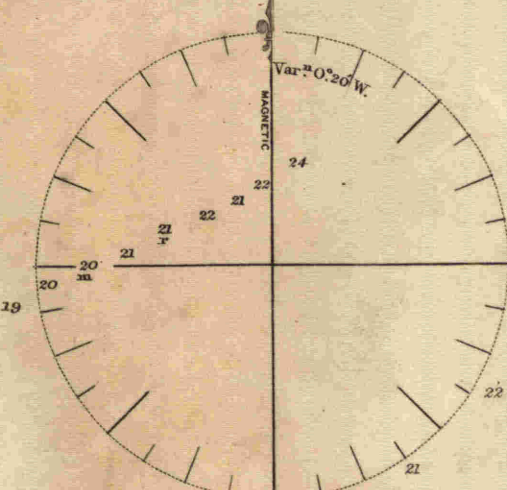
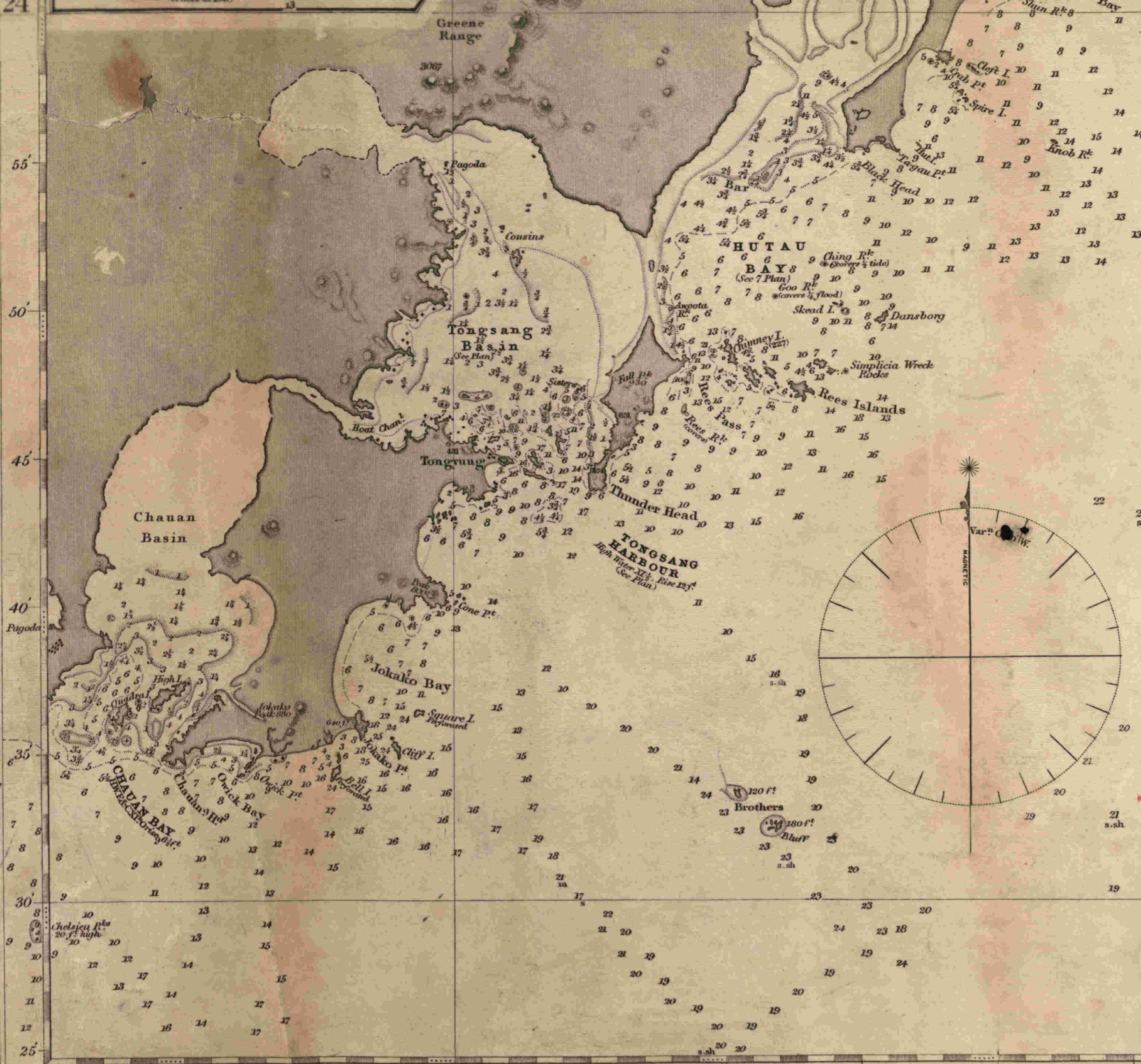
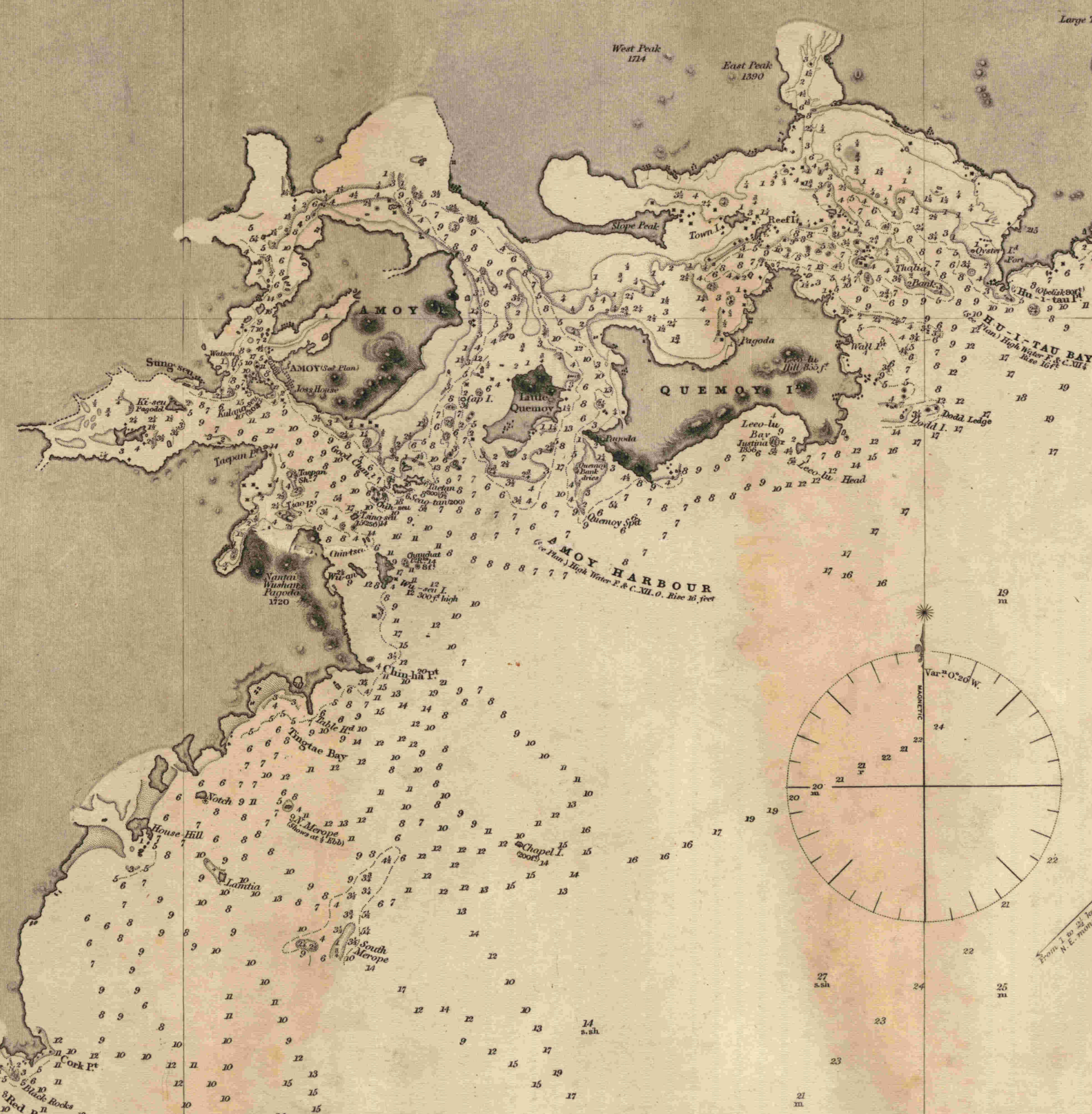
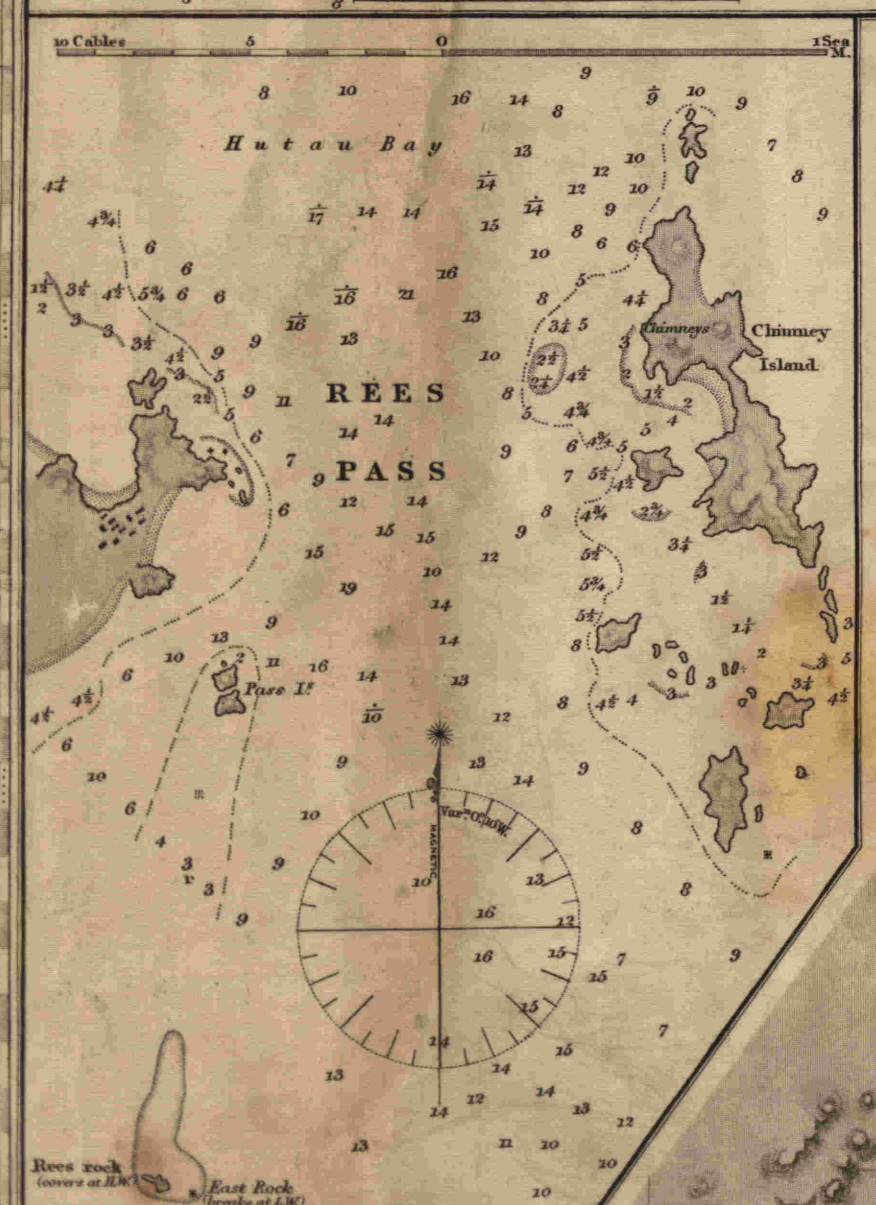


SHEET IV.  
EASTERN COAST  
FROM  
CHAUAN BAY TO PORT MATHESON  
INCLUDING THE  
PESCADORES ISLANDS

1844.  
*in mud & rock & sand & shells.*  
*Magnetic Variation 1863, Stationary.*  
*The heights are in Feet above the Sea.*  
 SOUNDINGS IN FATHOMS  
 B. Bay C. Cape D. Doubtful H<sup>d</sup> Head H<sup>t</sup> Harbour. I. Island  
 L. Lake P. Port P<sup>t</sup> Point R. River R<sup>k</sup> Rock Ru. Ruined.

Published Plans.			
	$\frac{1}{2}$ in.	No.	Year.
Tongsaug H <sup>t</sup> & Hutan Bay	1.0	1958	1958
Amoy Harbour	1.0	1767	18
Hutan & Caïmmo Bays	1.0	1958	18
Chin-än Harbour	1.5	1769	16
Pescadores I <sup>as</sup>	0.8	1961	26



FORMOSA

CHANNEL

118° Longitude East <sup>s</sup> from Greenwich *no*

119

10



